

# Gympie State High School

## BYO Program



## Intune Onboarding

### Windows 11 Version



# Getting your BYO device ready for school: Intune

## Windows 11 version

Intune is a secure mobile management system that allows you to use school Wi-Fi, emails, learning applications and websites on personal devices.

These instructions will show you how to enrol a BYO Windows device into Intune and install an application. This process may take up to 15 minutes to complete.

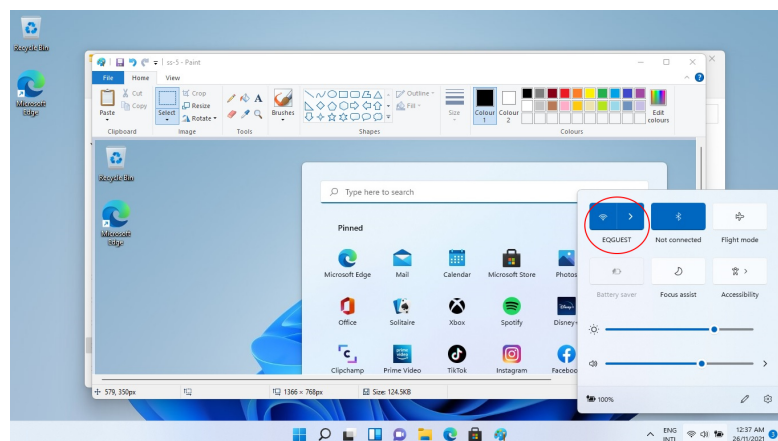
Before you start, please have ready the email address and password that has been supplied to you by the school. If you do not have this information, you will not be able to successfully complete the installation. Please contact your school to obtain these details.

These instructions are for Windows 11. You may find some of the screens look different to the ones provided here if you have an different version of Windows or there are changes made to Intune.

If the installation fails at any time, please restart your device and try again.

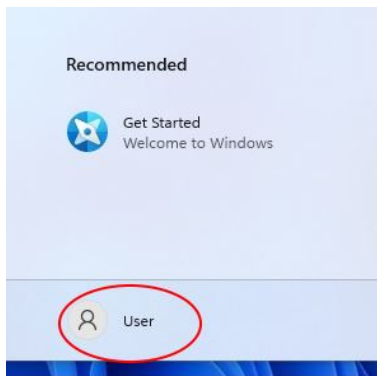
## How to onboard your device with Intune

### Step 1

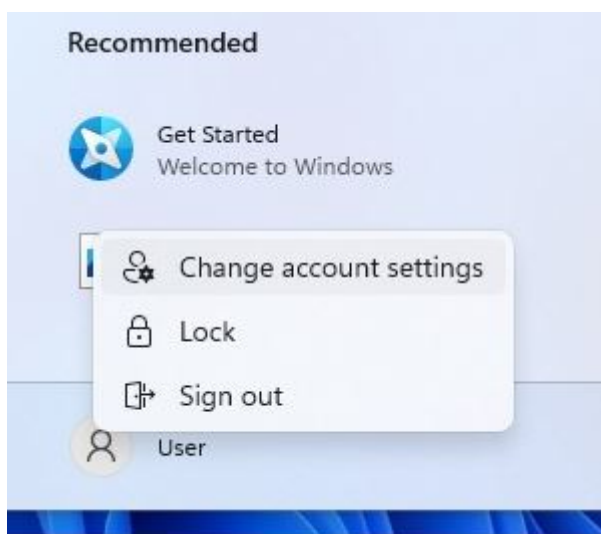


Make sure you are connected to the **EQQUEST** Wifi network

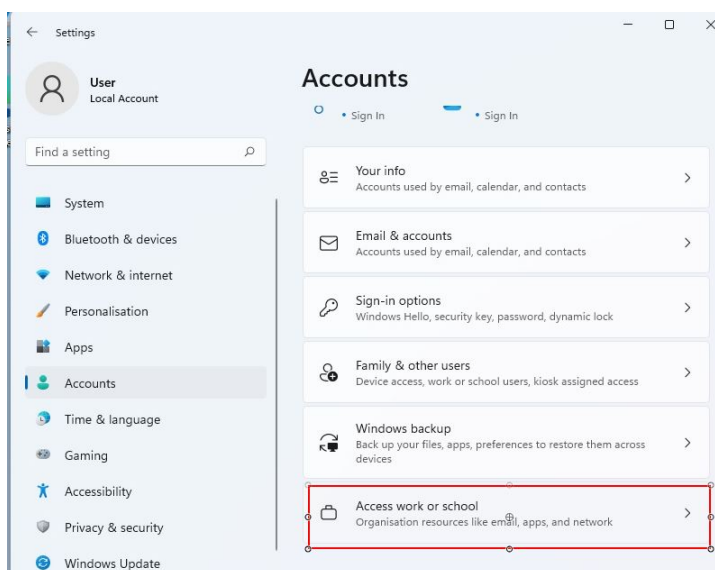


**Step 2**

Select the **person** icon.

**Step 3**

Select **Change account settings**.

**Step 4**

Select **Accounts** then

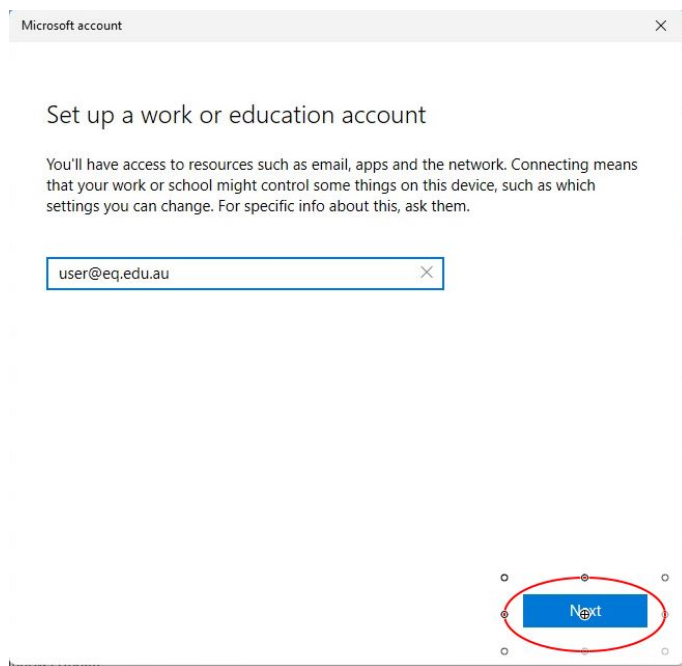
Select **Access work or school**.

If your account is already listed, select it and then select **Disconnect**.

Then select **Connect**.



## Step 5



Microsoft account

### Set up a work or education account

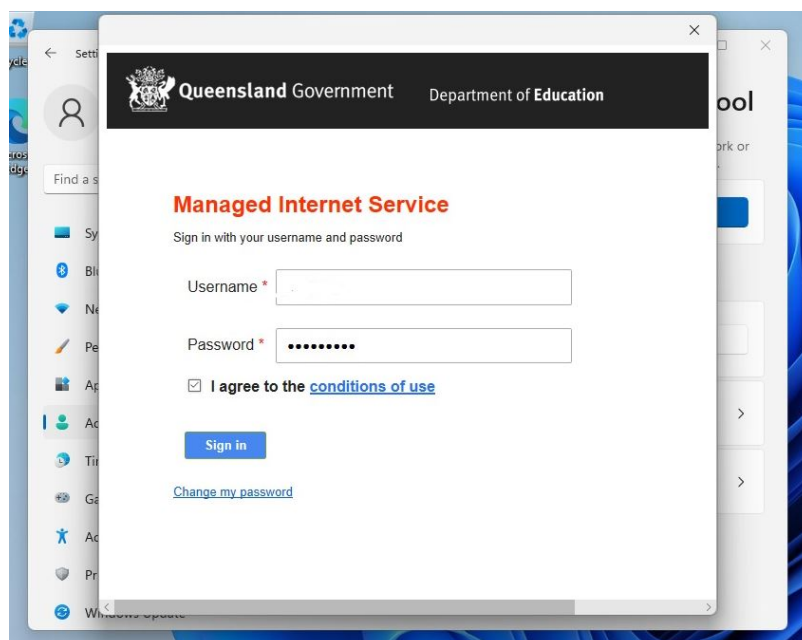
You'll have access to resources such as email, apps and the network. Connecting means that your work or school might control some things on this device, such as which settings you can change. For specific info about this, ask them.

user@eq.edu.au

Next

Enter your school  
@eq.edu.au email address  
and select **Next**.

## Step 6



Queensland Government Department of Education

### Managed Internet Service

Sign in with your username and password

Username \*

Password \*

☒ I agree to the [conditions of use](#)

[Sign in](#)

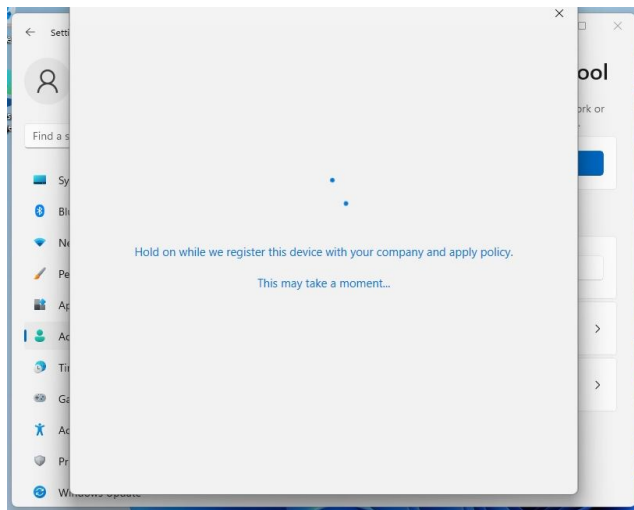
[Change my password](#)

The username may appear  
in the Username field in the  
Managed Internet Service  
screen.

If not, please enter your  
username, password, accept  
the terms and conditions,  
and **Sign in**.

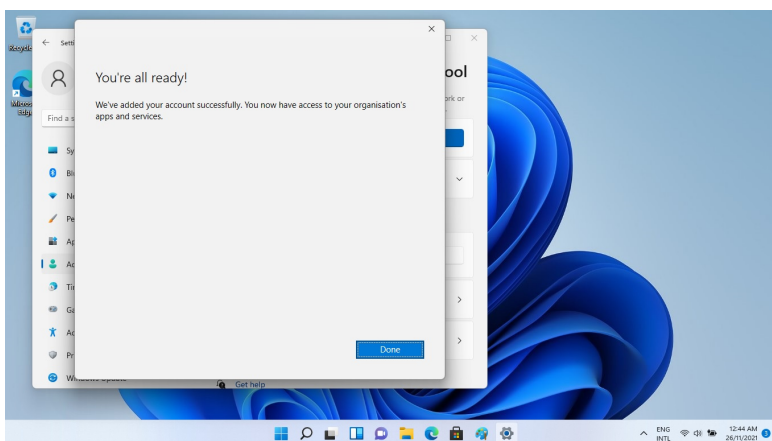


### Step 7



Please wait while the system is processing your request. This can take a few minutes. Make sure you stay connected to the network.

### Step 8



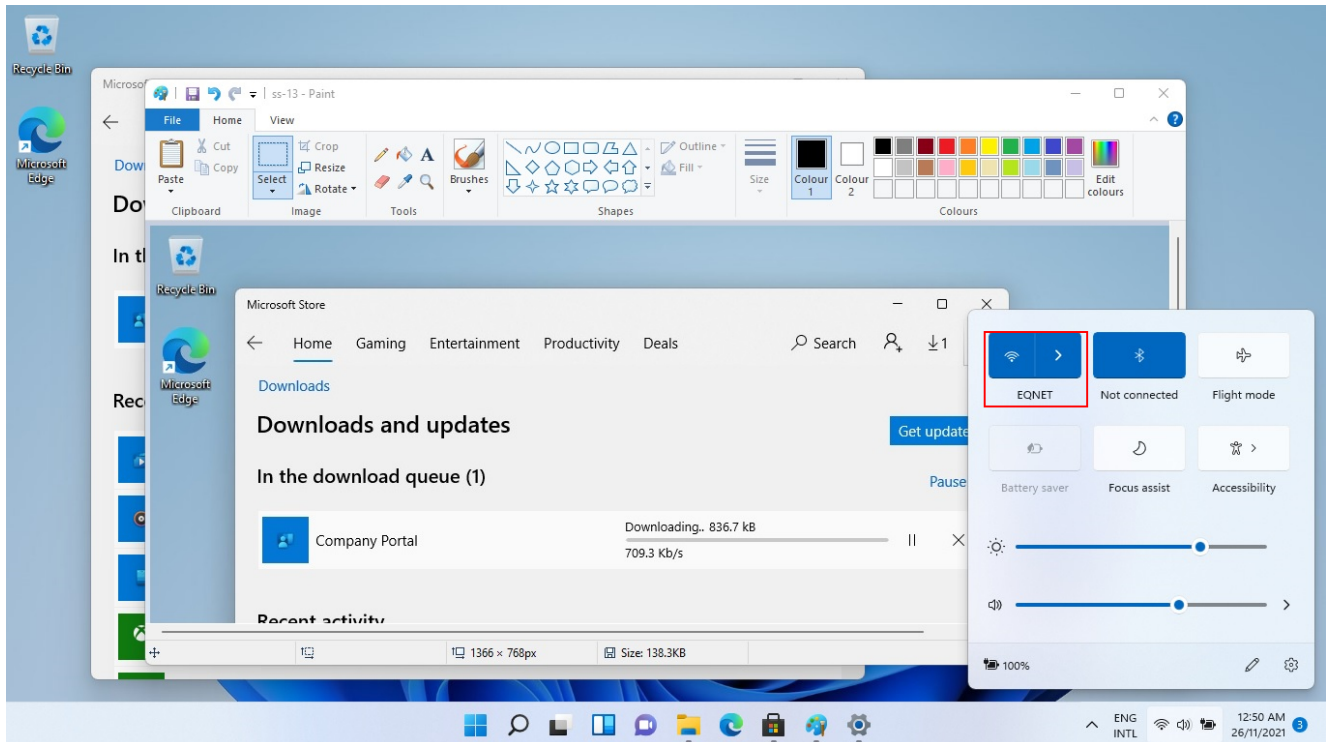
When finished the 'You're all ready' message will be displayed. Select **Done**



## Step 9

Wait a few minutes for the Company Portal app to download and install. Then restart your device. Your device might request a password change upon reboot.

After reboot, make sure your device is connected to the **EQNET** WiFi network. This will happen automatically and no username / password is required.



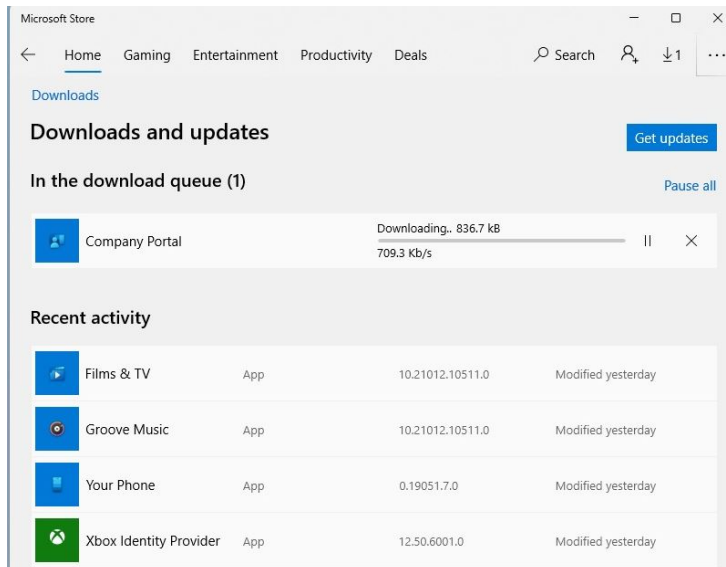
When your device has restarted, the Intune set up is completed. It may take up to 15 minutes to finish installing. You can use your device in the meantime but please keep it connected to the internet.

You are now ready to install the apps your school has recommended.



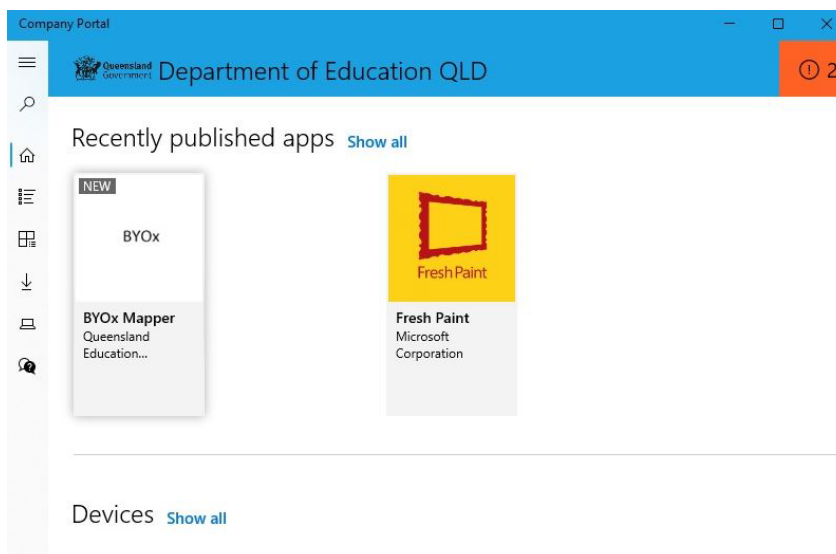
# How to install an app

## Step 1



If the Company Portal has not been installed in the previous steps, go to the **Microsoft Store** and Search for 'Company Portal' then select 'Install'.

## Step 2

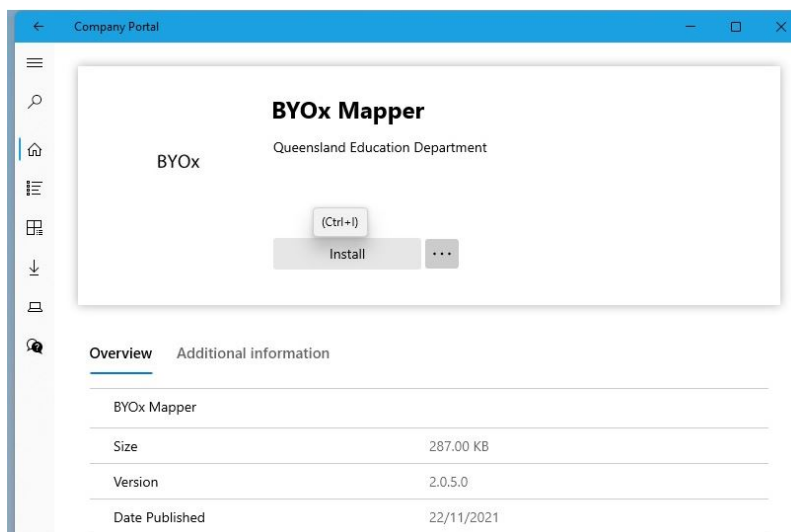


Open the Company Portal App from the Start Menu. Select **Show all** to see the apps your school has made available to you.





### Step 3



At Gympie State High School we recommend to install **BYOx Mapper** .

Click on the App Icon and then the Install button to download and install the app.

BYOx mapper is need to access G: and H: drives as well as the schools printers. It must be run every time after you restart your laptop at the school.

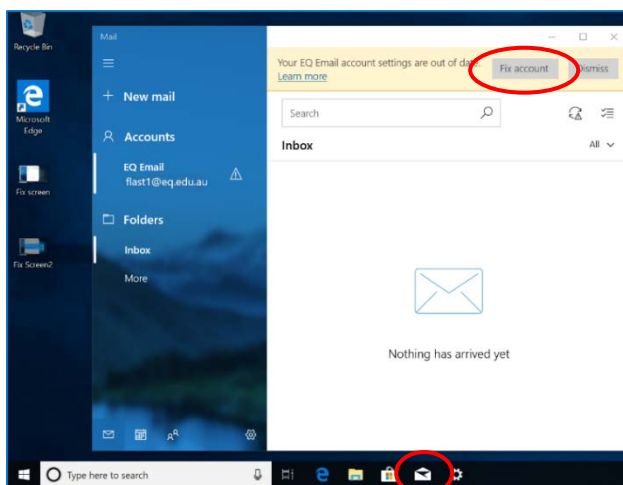
Next, you can set up your school mail account.





## How to set up mail

### Step 1

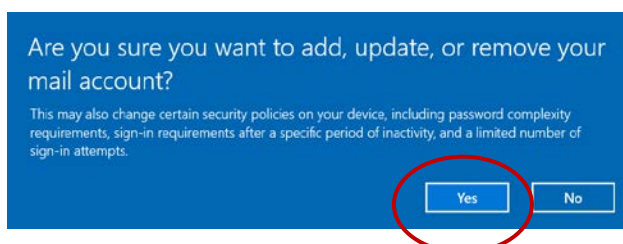


Open your mail app by selecting the **mail icon** at the bottom of the screen. You will see your school EQ Email account listed.

If you do not, please note it may take up to 20 minutes, depending on your device and internet connection.

There are some cases where it has taken up to a day to process. Please select **Fix Account**.

### Step 2



A message will then confirm if you want to make changes to your mail account, select **Yes**.

### Step 3



The All done! screen will be displayed. Select **Done**.

Your mail account has been set up for use and you can now send and receive emails from your school mail account.

Your device is now ready for school. If you need help with installing Intune, an app or mail account, please see your school for assistance.

